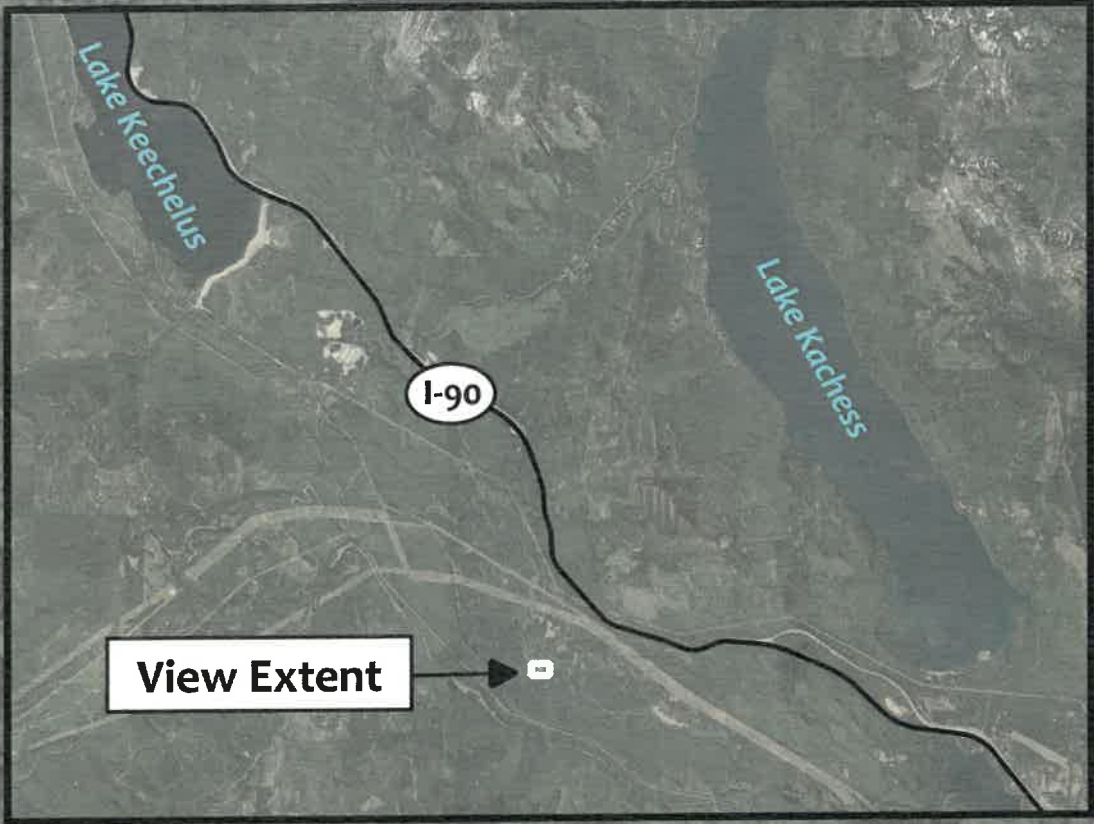


Fieldwork date: 12/3/2022
 Two feet of snow cover.
 OHWM not observable.
 Wetlands not observable.

Yakima River


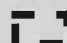



~ 108 ft

CABIN CREEK LODGE



View Extent

Potential wetlands between river and parking zone, based on woody vegetation, topography, and low river elevation.

-  project footprint (propane tanks)
-  study area
-  vehicular access/ parking lot (buffer interruption)
-  edge flowing water (at low flow)
-  potential side channel (dry)

PROJECT LOCATION, FOOTPRINT, AND STUDY AREA

Parcel #746136
 Cabin Creek Lodge
 3003 Cabin Creek Rd (NF 4823 / U-Fish Rd) Easton, WA 98925
 Kittitas County, Washington

0 50 ft



Map date: 12-5-2022
 Aerial: Google satellite

Direct questions regarding this map to:
 Geoffrey Gray, MA, PWS
 509-426-5645 | gg@gg-env.com



GG Environmental, LLC
 WETLANDS • FISH • WILDLIFE